



Monthly Newsletter 10 November 2020

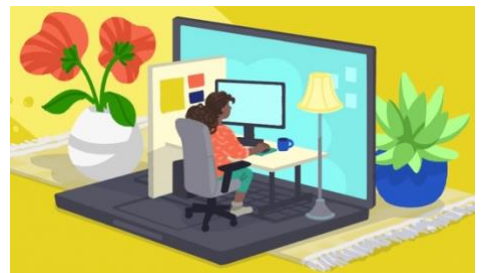
We are a local group aiming to raise awareness, encourage discussion and stimulate practical action to ensure we develop into the future as a thriving and sustainable community that responds positively to the big environmental and social challenges facing us all.



Fall, leaves, fall by Emily Brontë

*Fall, leaves, fall; die, flowers, away;
Lengthen night and shorten day;
Every leaf speaks bliss to me
Fluttering from the autumn tree.
I shall smile when wreaths of snow
Blossom where the rose should grow;
I shall sing when night's decay
Ushers in a drearier day.*

Seeds of hope? The Coronavirus pandemic presents challenges to everyone in our parish in different ways. In search of silver linings, could the pandemic provide opportunities for environmental action? One Young World, a global forum of leadership voices from the new generation, has been exploring some ideas : [What is the effect of COVID-19 on Climate Change?](#) For example might we: discover what can be achieved digitally through remote work, education, shopping, and more; feel more capable of tackling other pressing issues such as climate change as our governments, private institutions, and even social media succeed in partnering; be introduced to long-lasting habits, shaping how we deal with the climate crisis in the next decades; develop life styles that are incidentally beneficial to the environment as we experience limitations in travel, personal consumption and food supply with less tendency to waste. Tell us what you think?

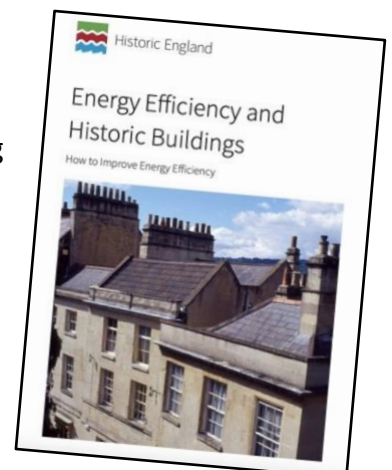


Rewilding Britain is a new countrywide organisation that focuses on rewilding and the benefits it can bring for people, nature and climate. It's good to know that our own efforts in Marshfield, including the Blue Heart verges, are part of a wider movement for the restoration of species-rich habitats across Britain. *Rewilding Britain* has an excellent new website full of resources, guides and videos. [Rewilding Britain](#) You can also subscribe for free to their e-newsletter.



Energy efficiency and historic buildings

You may be lucky enough to live in one of the nearly 200 houses in Marshfield officially listed as being of national architectural or historic importance. Planning regulations can limit improvements possible to improve the energy efficiency of your house. Historic England has produced a helpful guide to help lower carbon emissions and fuel bills while making your home more comfortable [Energy efficiency in older houses](#) We would be interested to hear of your own practical experiences.





Apple Press now available on loan We are delighted to have permanently adopted a macerator and apple press from Dyrham and Hinton Parish Council. Following our Community Apple pressing day in October this is now available on loan to households in Marshfield. It's not too late to press those last apples of the season. Contact info@marshfieldcommunitycentre.co.uk for more details.



Greener Places engagement South Gloucestershire Council is preparing a new 'Greener Places' strategy and is inviting initial views to help shape the draft. Enjoying local green spaces is something that many of us value. The Council wants to work together with everyone who lives, works in and visits the area to bring together a shared vision and priorities for greener places. You can make comments on this engagement exercise until **Sunday 8th November 2020**.

- Go to the **consultation page** to read about the Greener Places engagement exercise
- Complete the **online survey** to tell them what you think



Common purpose... Congratulations to the team who co-ordinated the Halloween trail around the village on 31st October. And to all those who scarily decorated their houses. It was great to see the High Street buzzing with socially distanced families, if only for an hour. Coming together with a sense of common purpose, especially in such tough times, is a good indicator of a functioning, healthy community. Maybe we could create more village



events; a Christmas trail? a revitalised Village Day? a Care for our Planet trail? What are your ideas?



The first AGM of Sustainable Marshfield was held via Zoom on 22nd October. The following were elected to committee posts:- Chair: *Peter Woodward*; Vice Chair: *Dawn Brooks*; Treasurer: *Tony Kerr*; Secretary: *Claire Russell-Bates*; general committee members:

Sara Firman, Sally Kerr, Neil Russell- Bates, Dan Smith, Martin Smith, Louise Wirick.

In his Chair's report, Peter Woodward offered 10 visions for a more Sustainable Marshfield, ranging from becoming a net zero carbon village to eliminating single-use plastic waste. His report finished: *'It is empowering to dream dreams and have visions rather than just focusing on the problems. I hope through the work of Sustainable Marshfield that we can continue to foster a culture of curiosity and shared conversation along these lines. Equally important is to actually do things to help make a difference. For now, a rousing 'shout out' to everyone taking action in serving our community especially at this testing time. Special thanks to the committee for agreeing to serve and taking on tasks. I don't pretend that the next 12 months is going to be any easier for us all, but where there's a will...'* You can get a copy of the full report from news@sustainablemarshfield.org

Sustainable Marshfield Green Drinks on-line will be at 7.30pm for an hour of catch-up and informal chat on **Thursday 19th November** via Zoom. Further details will be emailed out and added to the Sustainable Marshfield Facebook Page.

Growing Sustainable Marshfield membership with your help.

We want to grow our free membership, connecting up households in and around Marshfield who are interested in taking local action for sustainability. Please encourage friends and neighbours to join.

Email your name, address and phone number to: membership@sustainablemarshfield.org

All other correspondence to news@sustainablemarshfield.org

Join over 300 people on the **Sustainable Marshfield Group** on Facebook for regular updates.